



**ALDIANA**  
CLUB RESORTS

ALDIANA SALZKAMMERGUT \*\*\*\*



## HIGHLIGHTS

- GrimmingTherme with sauna area and spa
- Wide range of sports facilities
- Excellent Austrian cuisine
- Land of lakes

## LOCATION

At an altitude of approx. 800 m in Bad Mitterndorf, in the three-city corner between Graz (approx. 150 km), Salzburg (approx. 90 km) and Linz (approx. 140 km).

## FACILITIES

- National category: 4 stars, 166 rooms
- GrimmingTherme with Welldiana Club Spa
- spacious panorama restaurant
- Buffet restaurant with live cooking stations
- Green Rosin Corner: perfectly tasted and without preservatives - the vegan and vegetarian delicacies from star chef Frank Rosin at all meals
- Afternoon: Jaus'n Zeit (snack line)
- Large selection of different beers and wines, gin, whiskey and schnapps bar
- Bars: Theaterbar and Ollis Stüberl (all non-smoking, open on days) with outdoor terrace, Lounge
- theater, Blue Dolphin nightclub (open on selected days)
- a rustic Stüberl, cycling station
- numerous sports facilities
- Flosse Club with large adventure playground
- WLAN in the rooms, in various areas of the club and in the spa free of charge
- High-quality evening entertainment with shows and live entertainment
- Discover: countless excursion possibilities in the immediate vicinity
- Traditional costume evenings (feel free to bring your dirndl or lederhosen)
- Gala day: every week a whole day full of highlights, in the evening under the motto "black and white"

## ROOMS

The hotel has 166 rooms in the categories of double rooms, family rooms and suites or ClubOffice rooms.

## BOARD

All-Inclusive

## FITNESS & WELLNESS

Welldiana

- Club Spa with treatments, ultrasound treatments for fat and

wrinkle reduction; also therapeutic and wellness massages, cosmetics, exotic treatments (for a fee)

## Sport

- Basketball
- Beach volleyball
- Archery (already from 14 years of age as part of the childcare program, from May to September, weather permitting)
- Fitness studio: with cardio and strength training equipment as well as functional training area and barbells from Technogym
- Golf: 4 golf courses (3 x 18 holes, 1 x 9 holes) within 30 to 40 min. distance (car required), golf courses for beginners and advanced players\*.
- GroupFitness: numerous fitness and relaxation programs (from 14 years)
- Climbing: "Indoor-Boulder-Box" in the nearby hall or at the club's own climbing wall at the house
- Multifunctional court with floodlight
- Nordic Walking: 50 km of signposted routes with beautiful paths
- Outdoor activities: rafting, canyoning and kayaking (on request, 60 min. driving time)\*.
- Cycling: rental of mountain bikes and e-mountain bikes; over 1,000 km of signposted, challenging routes and guided tours (for a fee, weather permitting)
- Horseback riding: Riding stable is a few min. away\*.
- Soft sports: barefoot park, beach boccia, cross boccia, disc golf, Kneipp facility, kubb and speedminton, teqball
- Tennis: 1 quartz sand court directly at the club (racket rental free of charge), 3 indoor courts (carpet with granules) and 3 clay courts just a few minutes from the club\*.
- Hiking: guided tours from easy to challenging
- Water sports: stand-up paddling (on the Grundlsee, 20 minutes away)\*.

## KIDS & TEENS

- Childcare for 2-6 year olds from 09.00 to 20.00, special programs for 7-17 year olds during the German main holiday season.
- Flosse swimming school: swimming courses for children from 4 years old during the whole season\*

## ROOM TYPES



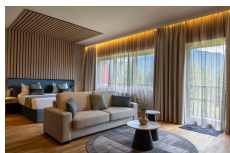
### Doubleroom

(DB1/DBB and DX2) Bathroom with shower, balcony, with (DBB) or without (DB1 / DX2) grimming view, approx. 28 sqm. Single rooms are double rooms for single use. Also possible with extra bed: approx. 80 x 195 cm.



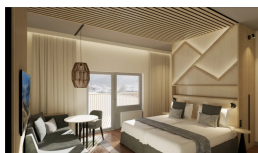
### Family room with connecting door (renovated in 2023)

(FV1 and FVB) 2 double rooms with connecting door for 4 persons, each double room a bathroom with shower and balcony with (FVB) or without (FV1) Grimmingblick, total approx. 58 sqm. Each with additional bed/sofa-bed for a child: approx. 80 x 195 cm.



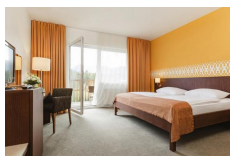
### Suite (renovated in 2023)

(WBB) Large double room with integrated living area. Bathroom with shower and bathtub, balcony, approx. 47 sqm. Extra bed is accommodated on pull-out sofa bed with lying surface: approx. 160 x 200 cm.



### Family room (renovated in 2023)

(FB1 and FB2) For 3 or 4 persons, 2 separate bedrooms, bathroom with shower and separate WC, balcony (FB1) or terrace (FB2), approx. 36 sqm (3-4 pers., with bunk beds in the 2nd bedroom) on the ground floor or approx. 43 sqm (only FB1, 4 pers.) on the upper floors.



### Doubleroom for single use

(EX1) The double room for single use is an additional contingent and is offered according to space availability. Accommodation is available in all room categories. No customer requests regarding location and furnishings can be accepted.